

# GE's Intelligent Motor Management System



# EntelliPro

Motor protection & Motor control



GE imagination at work

# Features and benefits

## Engineering phase

Features	Benefits
Fast initialisation, no risk	Preprogrammed and tested typicals
Easy adaptation to special requirements	Configuration of preprogrammed typicals
Individual control and protection solutions	Fully free programmable logic
Cost-effective solution	Adaptation to the customer needs
Easy communication and typical function pre-tests	Demonstration kit available
Trusted	SIL and ATEX certified Based on more than 20 years of experience in intelligent motor management technology Profibus-DP certified

## Commissioning phase

Features	Benefits
"Repair" wiring errors by software	I/O free configurable
Easy trouble shooting of fully flexible logic	Debug information within WinESG

## Operation phase

Features	Benefits
All information available at switchgear level	Touch control panel for local handling
High communication availability	Separated segments per switchgear Redundant communication with 2 independent field bus interfaces possible
Advanced trouble-shooting capability	Logging of analogue values in field device Event logging in field device Real time time stamping in field device
Easy parameter management	Comfortable user software WinESG

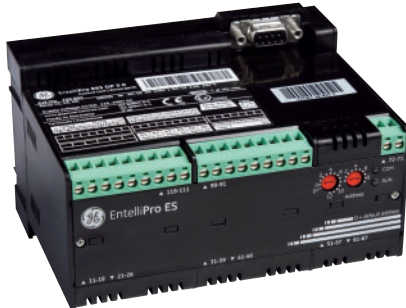
## Maintenance phase

Features	Benefits
Simple spare part handling, plug and play	Communication address set by switches
Easy communication maintenance	Automatic configuration
Simple expansion of existing installations	Fully compatible to EPOS system
EPOS systems can be upgraded to EntelliPro	Fully compatible to EPOS system

BENEFITS

# Motor Management System

## ES3



- I/O 7 digital inputs  
3 digital outputs

## ES5



- I/O 16 digital inputs  
8 digital outputs
- 4–20 mA output

### Protection

- Overload (Class 5 to 40)
- Earth fault (Residual current)
- Phase loss
- Thermistor (PTC)
- Start current
- Blocked rotor
- Under load
- Maximum starts per time
- Self monitoring
- External device monitoring

### More

- Local control and display devices
- Profibus DP and Modbus RTU
- Profibus DP certified
- Predefined control logic
- Free programmable logic
- SIL, ATEX certified

### Diagnostic

- Time to overload trip, release
- Number of operations
- Number of motor starts
- Motor ON-time, OFF-time
- Number of overload trips
- Number of thermistor trips
- Maximum currents
- Trip currents

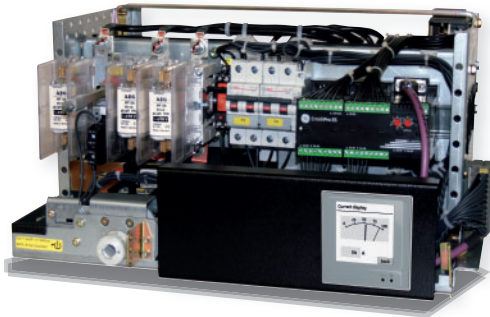
### Options

- 24 V DC or 110 – 240 V AC supply

# Motor Management System

- Motor protection
- Motor control
- Interface with process control and SCADA system
- Status information from motors and switchgear
- Maintenance information
- Management of settings and configuration

## Single drawer with local control

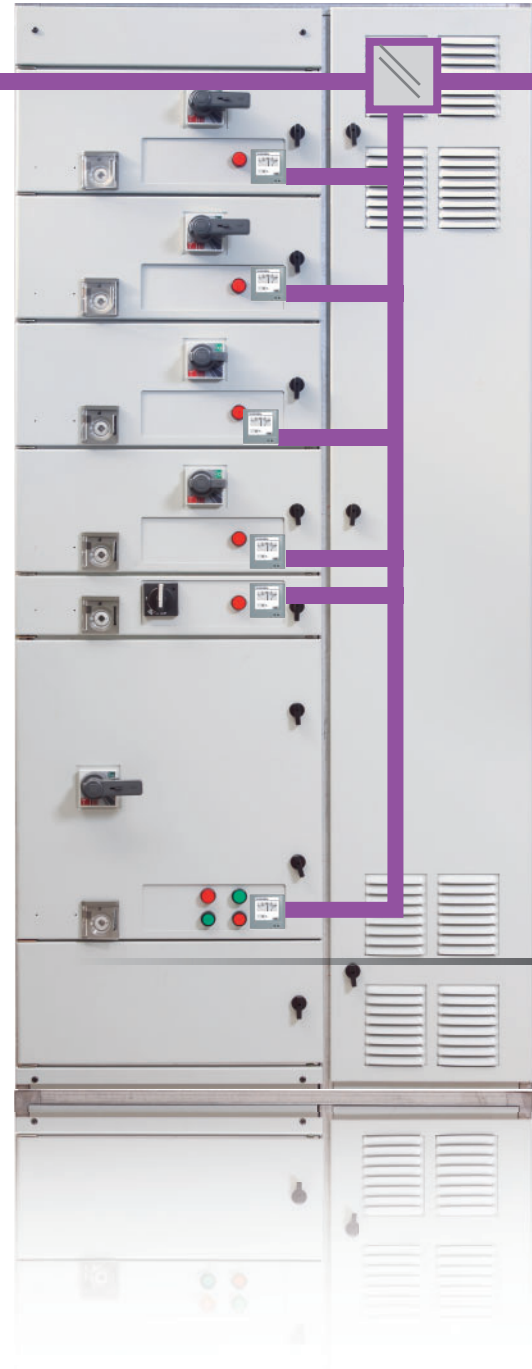


## Demonstration kit



### Can be used for:

- Personal training
- Pre-testing the SCADA system
- Pre-testing drive application settings



INTELLIGENT



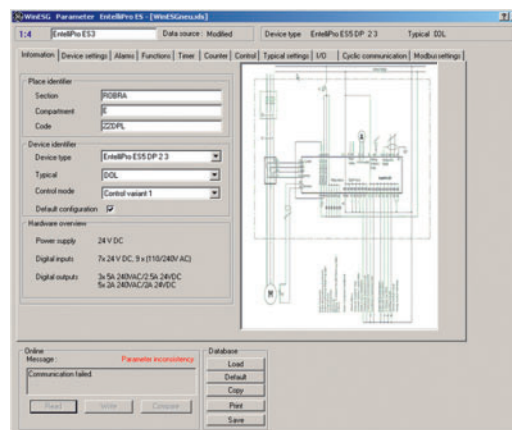
## Integrated into MCC panels ...

- SEN Plus
- SEK/SEV 32

## Profibus-DP

## User software WinESG

- User software for all features
- Comfortable setting management
- Event logging displaying
- Current value displaying



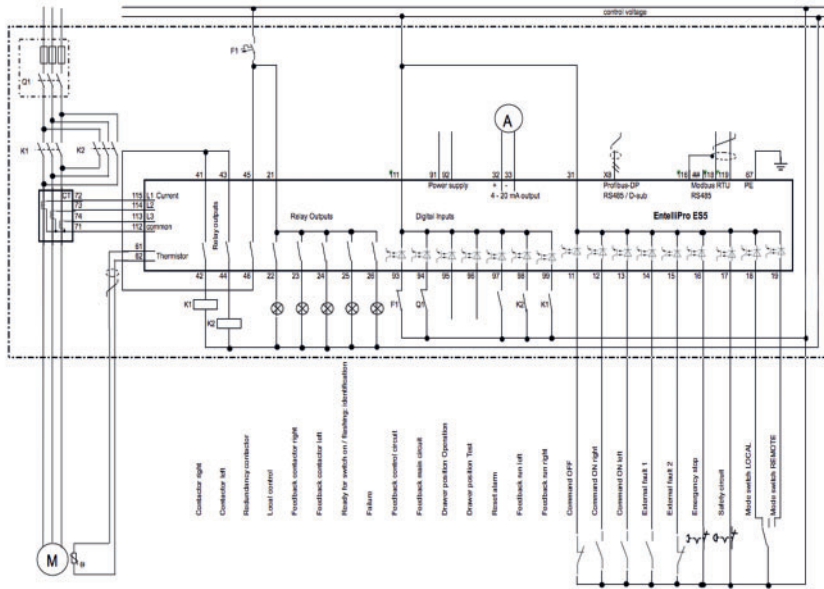
## Touch control panel

- Smart local handling
- Smart & easy to use
- Multilingual
- Grafical display



MANAGEMENT

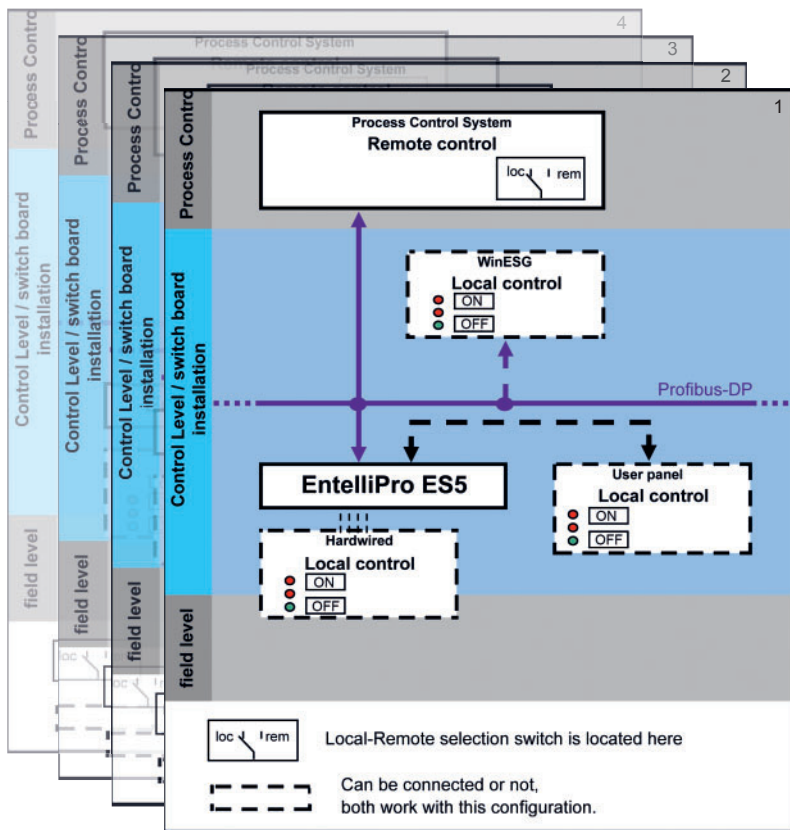
# Motor drive application



## Drive typicals

- Direct-on-line (DOL)
- Reverse
- Star delta
- Star delta reverse
- Softstarter
- Softstarter reverse
- Breaker control
- Dahlander
- Pole changing starter
- Solenoid valve
- Actuator

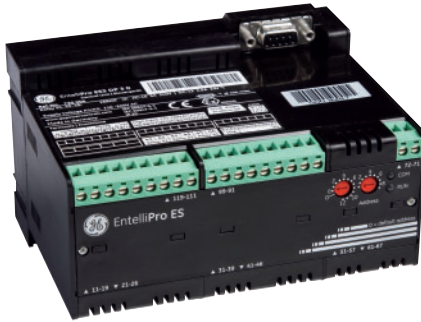
# Typical control logic



## Predefined control logic selectable

- The control logic coordinates the commands from four different control units

# Order information



## EntelliPro ES3 DP 2 2

ES3 = Standard device  
ES5 = Medium device

2 = Power supply and 7 digital inputs, voltage 24V DC  
3 = Power supply and 7 digital inputs, voltage 110-240V AC

0 = no additional 9 digital inputs available  
2 = additional 9 digital input, voltage 24V DC  
3 = additional 9 digital input, voltage 110-240V AC

EntelliPro ES3 DP 2 0	720003	Standard device 24V DC
EntelliPro ES3 DP 3 0	720004	Standard device 110-240V AC
EntelliPro ES5 DP 2 2	720005	Medium device 24V DC
EntelliPro ES5 DP 2 3	720006	Medium device 24V DC
EntelliPro ES5 DP 3 3	720007	Medium device 110-240V AC
EntelliPro CT 8	720022	EntelliPro Current transformer up to 8A
EntelliPro CT 32	720023	EntelliPro Current transformer up to 32A
EntelliPro CT 64	720024	EntelliPro Current transformer up to 64A
EntelliPro CT 630	720025	EntelliPro Current transformer up to 630A
EntelliPro CP3	720028	EntelliPro CP3 HMI 3,3" LCD
EntelliPro CP5	720029	EntelliPro CP5 HMI 7" colour TFT-LCD
EntelliPro Demonstration kit	720030	Demonstration kit for EntelliPro

Installation manual in eight languages available:  
german, english, french, spanish, italian, portuguese, dutch, russian

Industrial Solutions (formerly Power Protection) a division of GE Energy, is a first class European supplier of low-voltage products including wiring devices, residential and industrial electrical distribution components, automation products, enclosures and switchboards. Demand for the company's products comes from, wholesalers, installers, panel-board builders, contractors, OEMs and utilities worldwide.

  
[www.ge.com/ex/industrialsolutions](http://www.ge.com/ex/industrialsolutions)  
[www.ge.com/de/industrialsolutions](http://www.ge.com/de/industrialsolutions)

GE Energy Industrial Solutions Ltd  
Houghton Centre  
Salthouse Road  
Blackmills  
Northampton  
NN4 7EX

Customer Service  
Tel. 0800 587 1239  
Fax 0800 587 1251  
e-mail: [order.consind@ge.com](mailto:order.consind@ge.com)

GE Energy Industrial Solutions  
Berliner Platz 2-6  
D-24534 Neumünster  
Germany

Customer Service  
Tel. +49/4321201-0  
Fax +49/4321201-543



GE imagination at work